


M:\Documentation\Website Downloads\2. Aluminium Frames\1. Vertical\2. Servery\VS 2P16C FS A (1) - 2 pane servery 16mm double glazed CLEARSTEP sashless vertical slider in aluminium frames (top pane fixed) FS.dwg

Table of Contents

Page	View	Box Type	Sill Type
2	Vertical Section	Medium Box	VS Sill
3	Vertical Section	Medium Box	VS HP Sill
4	Vertical Section	Medium Box	None
5	Horizontal Section	Medium Box	-
6	Vertical Section	Large Box / Extra Large Box	VS Sill
7	Vertical Section	Large Box / Extra Large Box	VS HP Sill
8	Vertical Section	Large Box / Extra Large Box	None
9	Horizontal Section	Large Box	-
10	Horizontal Section	Extra Large Box	-

Rev	Description	Approved By	Date
I	Description for 16mm IGU units makeup updated	DF	18/12/2025
H	Delete P008 and replace with P229 - VS Sill	DF	19/8/2025
G	Description for 16mm Clearstep IGU makeup added	DF	Jul2025
F	VS 300Pa/800Pa sill adaptor changed to VS Sill/VS HP Sill	DF	Sep2024
E	Add sill options: 800Pa Sill, No Sill, 16mm Flapseal	SE	Apr2024
D	Update locks and extension pins	SE	Dec2020

Proprietary and confidential  The information contained in this drawing is the sole property of Aneeta Australia. Any reproduction in part or as a whole, without the written permission of Aneeta Australia is prohibited.	Title: 2 pane servery 16mm double glazed CLEARSTEP sashless vertical slider in aluminium frames (top pane fixed) FS	
	Drwn:-	Chk:      Date: -      Scale:



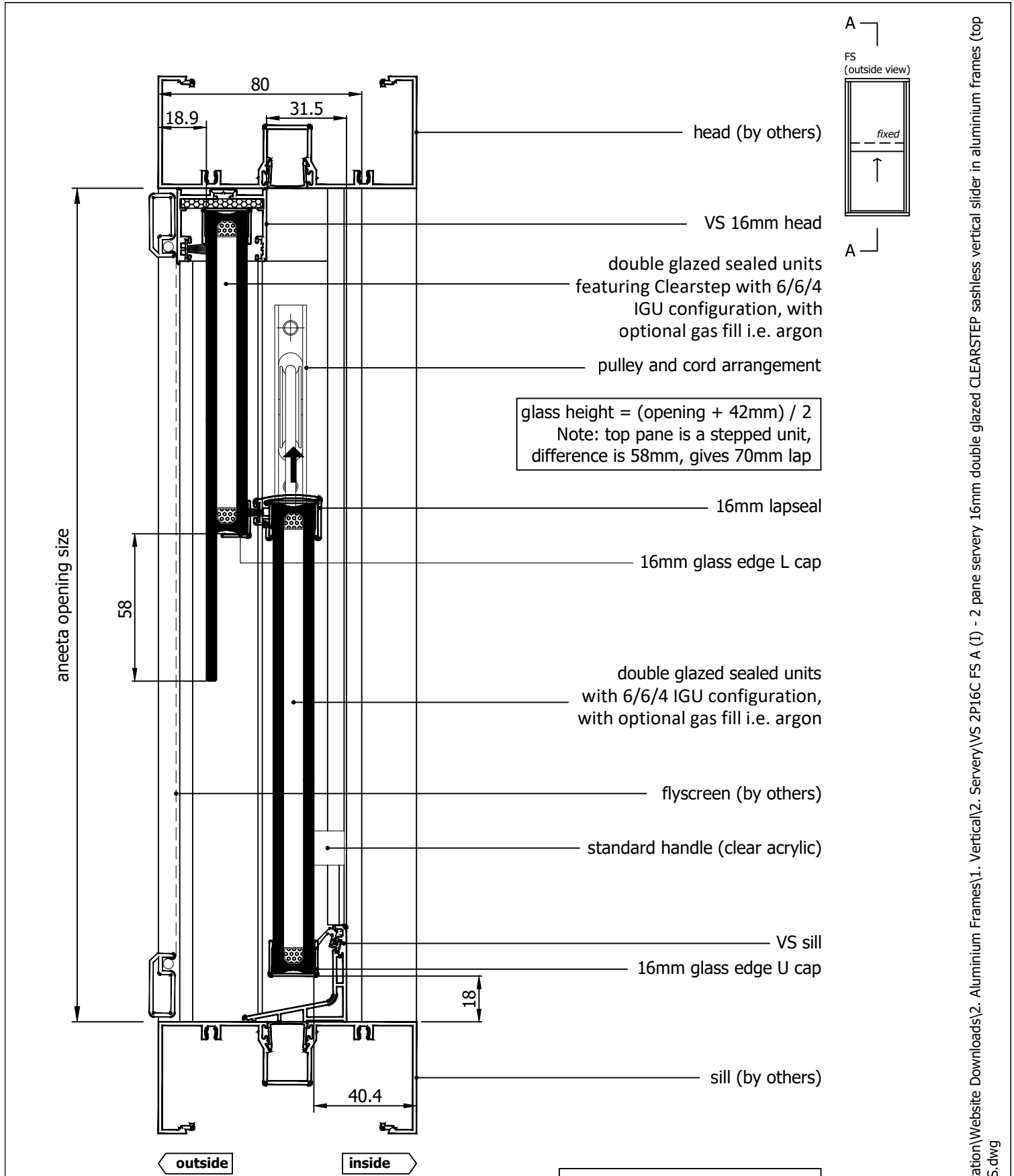
949 Stud Road, Rowville VIC 3178, ABN 80 062 883 729

Sheet 1 of 10	Revision: I
---------------	-------------

Material:	in Aluminium Frame
Finish:	
Die/Part:	
Dwg No:	VS 2P16C FS A



IF IN DOUBT ASK - DO NOT SCALE DRAWING



glass height = (opening + 42mm) / 2  
Note: top pane is a stepped unit,  
difference is 58mm, gives 70mm lap

aneeta insert is shown here in  
100mm commercial framing but  
it suits a variety of residential  
and commercial frame types

Rev	Description	Approved By	Date
I	Description for 16mm IGU units makeup updated	DF	18/12/2025
H	Delete P008 and replace with P229 - VS Sill	DF	19/8/2025
G	Description for 16mm Clearstep IGU makeup added	DF	Jul2025
F	VS 300Pa/800Pa sill adaptor changed to VS Sill/VS HP Sill	DF	Sep2024
E	Add sill options: 800Pa Sill, No Sill, 16mm Flapseal	SE	Apr2024
D	Update locks and extension pins	SE	Dec2020

Proprietary and confidential

The information contained in this drawing is the sole property of Aneeta Australia. Any reproduction in part or as a whole, without the written permission of Aneeta Australia is prohibited.


Title:  
2 pane servery 16mm double glazed CLEARSTEP sashless vertical slider in aluminium frames (top pane fixed) FS with medium box with aluminium covers, acrylic handle, VS sill vertical section A-A

Drwn:-

Chk:

Date: -

Scale: 1:2



949 Stud Road, Rowville VIC 3178, ABN 80 062 883 729

Material:  
in Aluminium Frame

Finish:

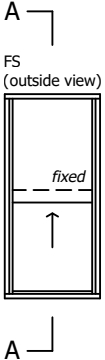
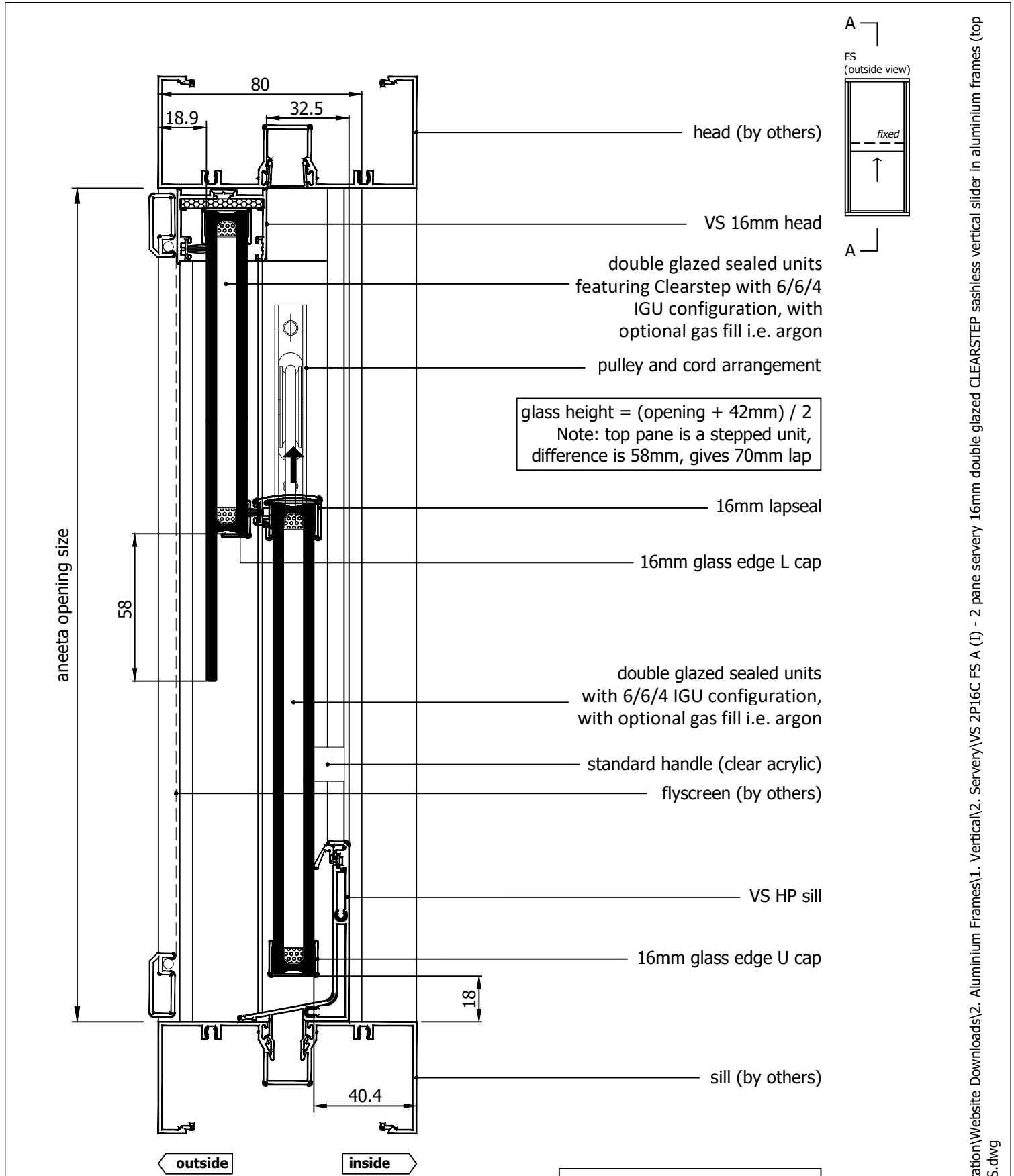
Die/Part:

Dwg No: VS 2P16C FS A

Sheet 2 of 10

Revision: I

M:\Documentation\Website Downloads\2. Aluminium Frames\1. Vertical\2. Servery\VS 2P16C FS A (I) - 2 pane servery 16mm double glazed CLEARSTEP sashless vertical slider in aluminium frames (top pane fixed) FS.dwg



Rev	Description	Approved By	Date
I	Description for 16mm IGU units makeup updated	DF	18/12/2025
H	Delete P008 and replace with P229 - VS Sill	DF	19/8/2025
G	Description for 16mm Clearstep IGU makeup added	DF	Jul2025
F	VS 300Pa/800Pa sill adaptor changed to VS Sill/VS HP Sill	DF	Sep2024
E	Add sill options: 800Pa Sill, No Sill, 16mm Flapseal	SE	Apr2024
D	Update locks and extension pins	SE	Dec2020

Proprietary and confidential

The information contained in this drawing is the sole property of Aneeta Australia. Any reproduction in part or as a whole, without the written permission of Aneeta Australia is prohibited.

Title:  
2 pane servery 16mm double glazed CLEARSTEP sashless vertical slider in aluminium frames (top pane fixed) FS with medium box with aluminium covers, acrylic handle, VS HP sill vertical section A-A

Drwn:-    Chk:    Date: -    Scale: 1:2@A4

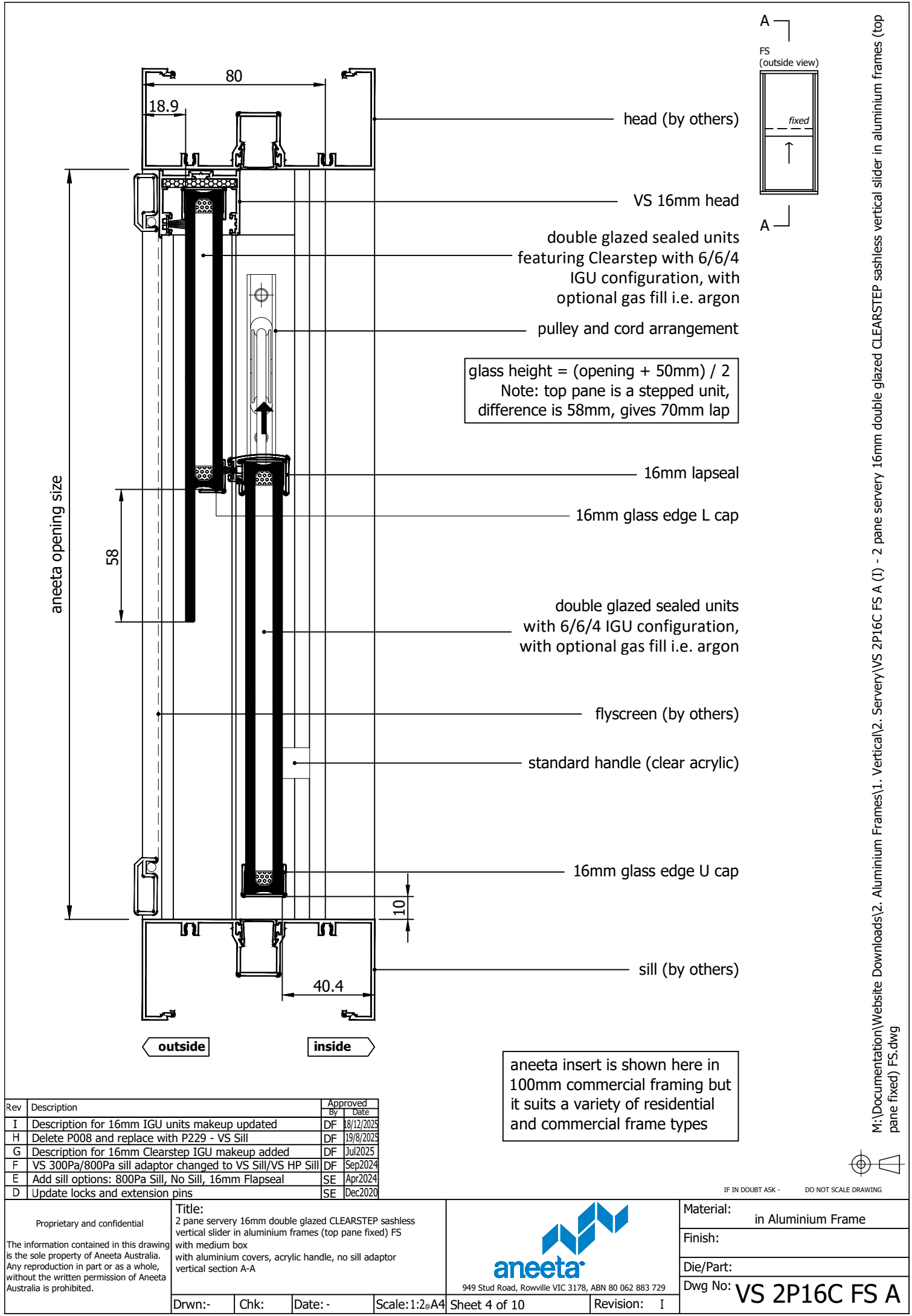
aneeta

949 Stud Road, Rowville VIC 3178, ABN 80 062 883 729

Sheet 3 of 10

Material:	in Aluminium Frame
Finish:	
Die/Part:	
Dwg No:	VS 2P16C FS A

M:\Documentation\Website Downloads\2. Aluminium Frames\1. Vertical\2. Servery\VS 2P16C FS A (I) - 2 pane servery 16mm double glazed CLEARSTEP sashless vertical slider in aluminium frames (top pane fixed) FS.dwg



Rev	Description	Approved By	Date
I	Description for 16mm IGU units makeup updated	DF	18/12/2025
H	Delete P008 and replace with P229 - VS Sill	DF	19/8/2025
G	Description for 16mm Clearstep IGU makeup added	DF	Jul2025
F	VS 300Pa/800Pa sill adaptor changed to VS Sill/VS HP Sill	DF	Sep2024
E	Add sill options: 800Pa Sill, No Sill, 16mm Flapseal	SE	Apr2024
D	Update locks and extension pins	SE	Dec2020

Proprietary and confidential

The information contained in this drawing is the sole property of Aneeta Australia. Any reproduction in part or as a whole, without the written permission of Aneeta Australia is prohibited.

Title:  
2 pane servery 16mm double glazed CLEARSTEP sashless vertical slider in aluminium frames (top pane fixed) FS with medium box with aluminium covers, acrylic handle, no sill adaptor vertical section A-A

aneeta

949 Stud Road, Rowville VIC 3178, ABN 80 062 883 729

Material: in Aluminium Frame

Finish:

Die/Part:

Dwg No: VS 2P16C FS A

Drwn:-

Chk:

Date: -

Scale: 1:2@A4

Sheet 4 of 10

Revision: I

M:\Documentation\Website Downloads\2. Aluminium Frames\1. Vertical\2. Servery\VS 2P16C FS A (I) - 2 pane servery 16mm double glazed CLEARSTEP sashless vertical slider in aluminium frames (top pane fixed) FS.dwg

glass width = opening - 110mm

aneeta opening size

flyscreen (optional by others)

16mm combination tee

top pane

18.9

40.4

bottom pane

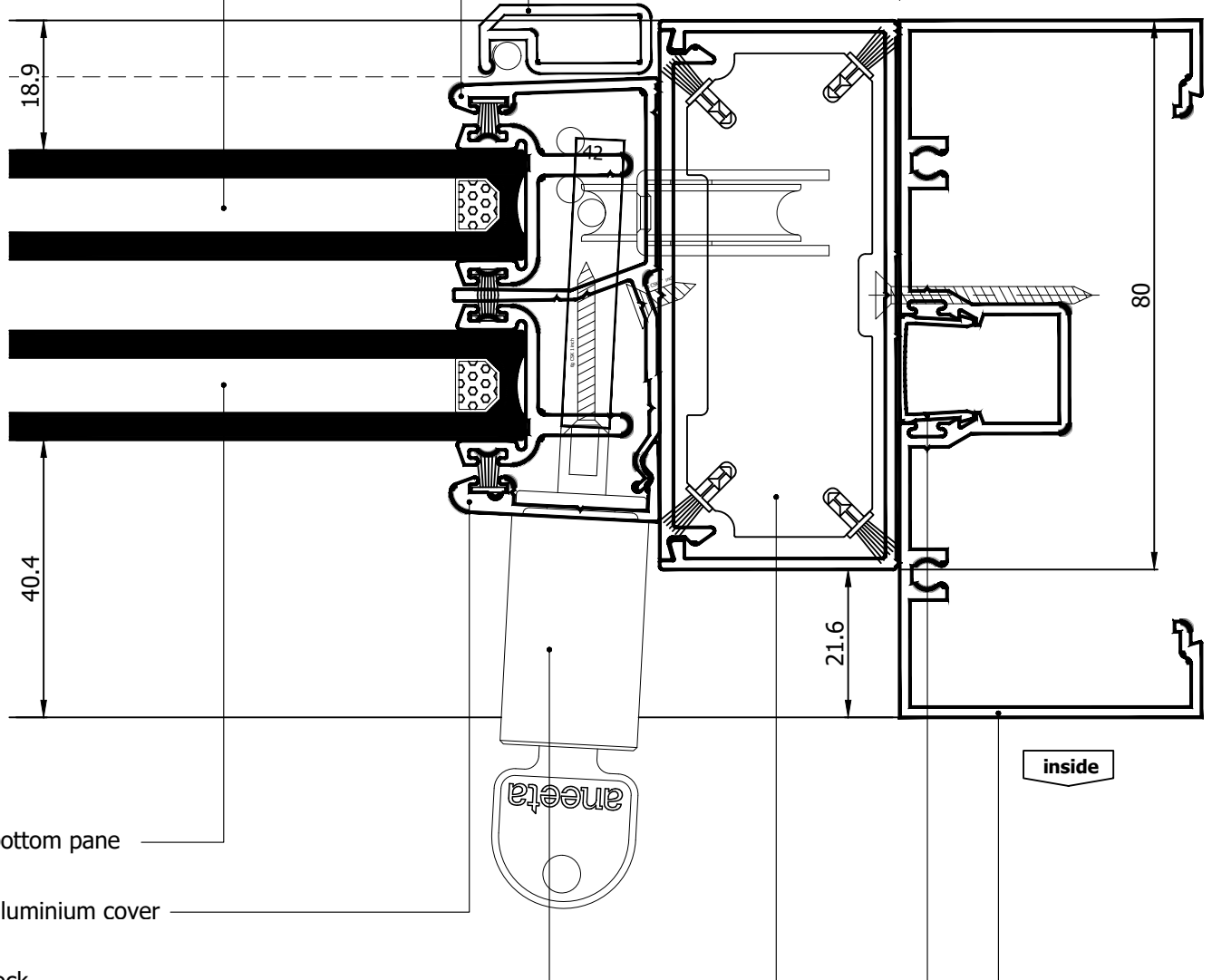
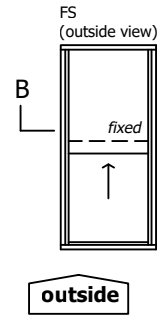
aluminium cover

lock

80 x 35mm box containing lead weight  
to counter balance moving pane of glass

flush filler (by others)

jamb (by others)



aneeta insert is shown here in  
100mm commercial framing but  
it suits a variety of residential  
and commercial frame types

Rev	Description	Approved By	Date
I	Description for 16mm IGU units makeup updated	DF	18/12/2025
H	Delete P008 and replace with P229 - VS Sill	DF	19/8/2025
G	Description for 16mm Clearstep IGU makeup added	DF	Jul2025
F	VS 300Pa/800Pa sill adaptor changed to VS Sill/VS HP Sill	DF	Sep2024
E	Add sill options: 800Pa Sill, No Sill, 16mm Flapseal	SE	Apr2024
D	Update locks and extension pins	SE	Dec2020

Proprietary and confidential

The information contained in this drawing is the sole property of Aneeta Australia. Any reproduction in part or as a whole, without the written permission of Aneeta Australia is prohibited.

Title:  
2 pane servery 16mm double glazed CLEARSTEP sashless vertical slider in aluminium frames (top pane fixed) FS  
with medium box  
with aluminium covers  
horizontal section B-B

Drwn:-

Chk:

Date: -

Scale: 1:1@A4

Sheet 5 of 10

Revision: I

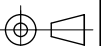


Material: in Aluminium Frame

Finish:

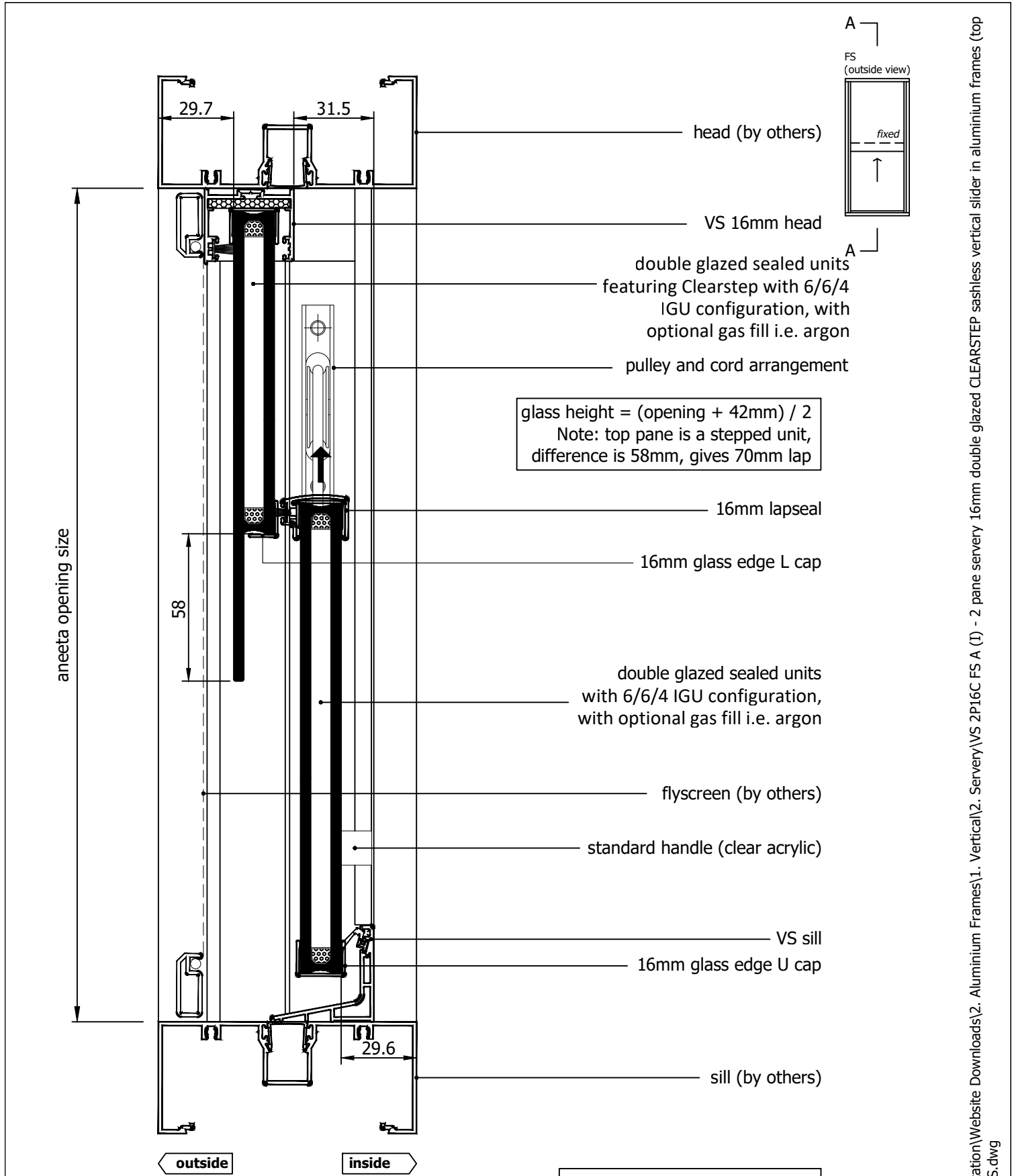
Die/Part:

Dwg No: VS 2P16C FS A



IF IN DOUBT ASK - DO NOT SCALE DRAWING

M:\Documentation\Website Downloads\2. Aluminium Frames\1. Vertical\2. Servery\VS 2P16C FS A (I) - 2 pane servery 16mm double glazed CLEARSTEP sashless vertical slider in aluminium frames (top pane fixed) FS.dwg



glass height = (opening + 42mm) / 2  
Note: top pane is a stepped unit,  
difference is 58mm, gives 70mm lap

aneeta insert is shown here in  
100mm commercial framing but  
it suits a variety of residential  
and commercial frame types

Rev	Description	Approved By	Date
I	Description for 16mm IGU units makeup updated	DF	18/12/2025
H	Delete P008 and replace with P229 - VS Sill	DF	19/8/2025
G	Description for 16mm Clearstep IGU makeup added	DF	Jul2025
F	VS 300Pa/800Pa sill adaptor changed to VS Sill/VS HP Sill	DF	Sep2024
E	Add sill options: 800Pa Sill, No Sill, 16mm Flapseal	SE	Apr2024
D	Update locks and extension pins	SE	Dec2020

Proprietary and confidential

The information contained in this drawing is the sole property of Aneeta Australia. Any reproduction in part or as a whole, without the written permission of Aneeta Australia is prohibited.

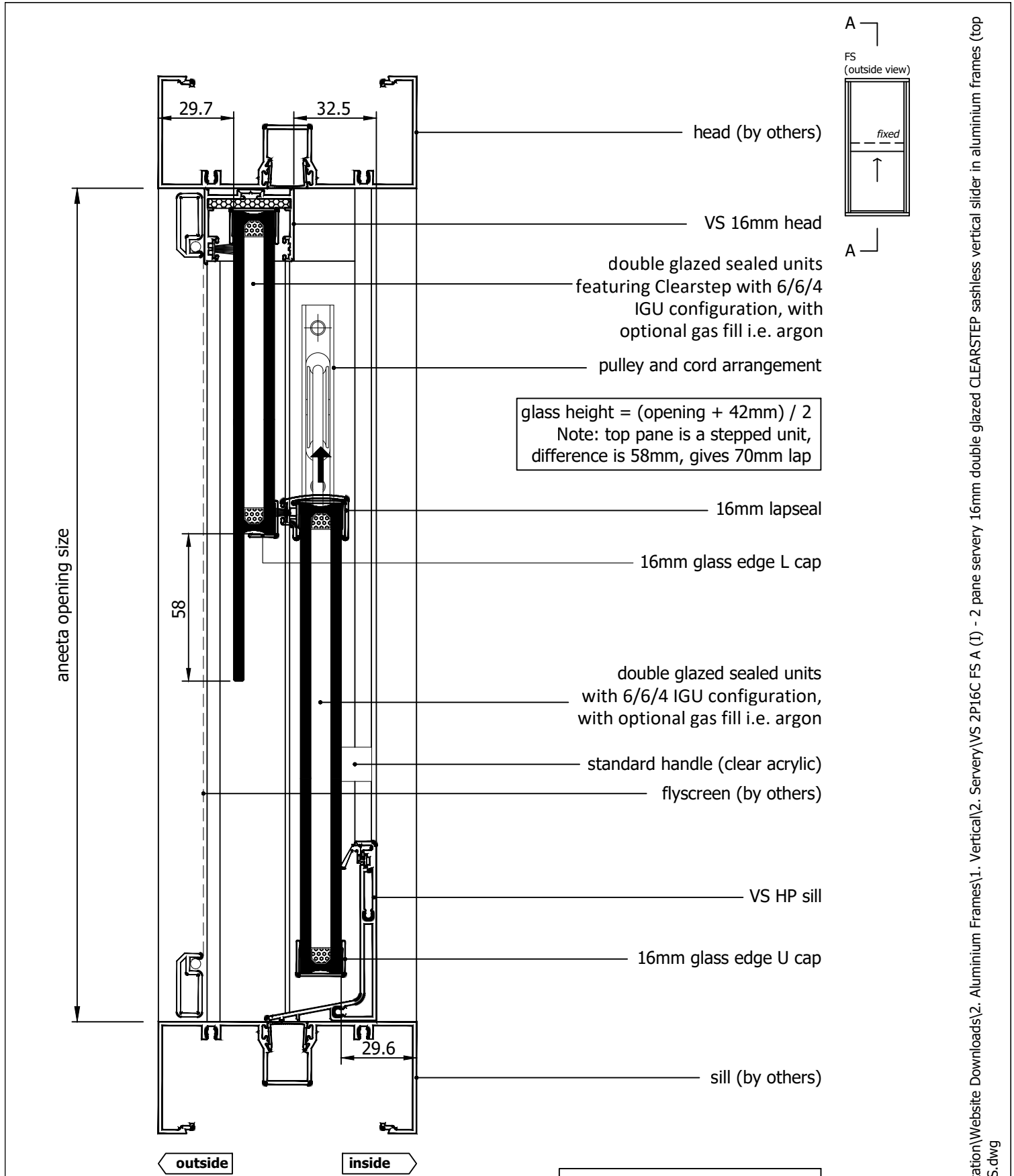
Title:  
2 pane servery 16mm double glazed CLEARSTEP sashless vertical slider in aluminium frames (top pane fixed) FS  
with large box / extra large box  
with aluminium covers, acrylic handle, VS sill  
vertical section A-A

aneeta

949 Stud Road, Rowville VIC 3178, ABN 80 062 883 729

Material:	in Aluminium Frame
Finish:	
Die/Part:	
Dwg No:	VS 2P16C FS A

Drwn:-	Chk:	Date: -	Scale: 1:2	Sheet 6 of 10	Revision: I
--------	------	---------	------------	---------------	-------------




Rev	Description	Approved By	Date
I	Description for 16mm IGU units makeup updated	DF	18/12/2025
H	Delete P008 and replace with P229 - VS Sill	DF	19/8/2025
G	Description for 16mm Clearstep IGU makeup added	DF	Jul2025
F	VS 300Pa/800Pa sill adaptor changed to VS Sill/VS HP Sill	DF	Sep2024
E	Add sill options: 800Pa Sill, No Sill, 16mm Flapseal	SE	Apr2024
D	Update locks and extension pins	SE	Dec2020

Proprietary and confidential

The information contained in this drawing is the sole property of Aneeta Australia. Any reproduction in part or as a whole, without the written permission of Aneeta Australia is prohibited.

Title:  
2 pane servery 16mm double glazed CLEARSTEP sashless vertical slider in aluminium frames (top pane fixed) FS  
with large box / extra large box  
with aluminium covers, acrylic handle, VS HP sill  
vertical section A-A

Drwn:-    Chk:    Date: -    Scale: 1:2@A4



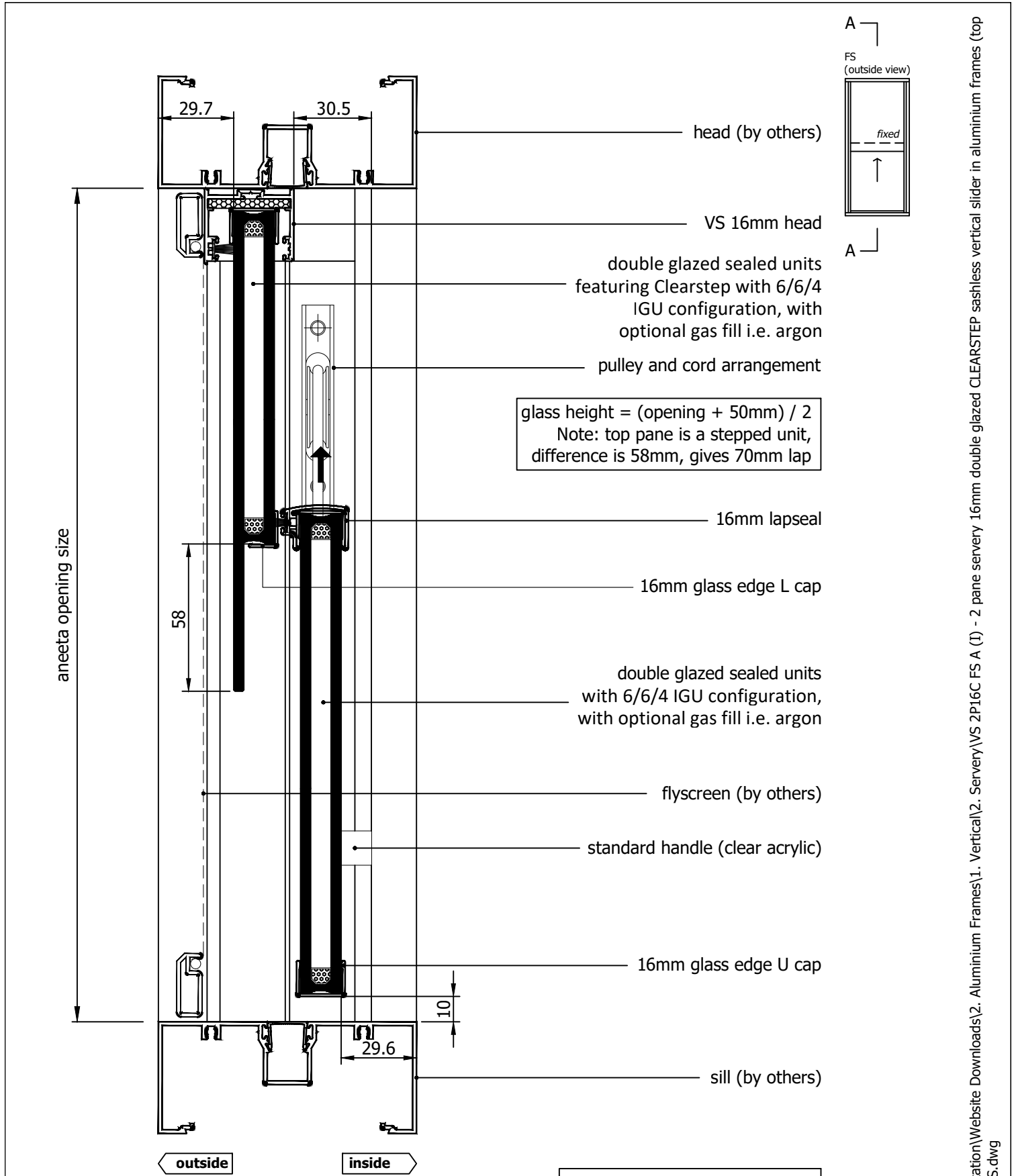
949 Stud Road, Rowville VIC 3178, ABN 80 062 883 729

Sheet 7 of 10

Revision: I

Material:	in Aluminium Frame
Finish:	
Die/Part:	
Dwg No:	VS 2P16C FS A

M:\Documentation\Website Downloads\2. Aluminium Frames\1. Vertical\2. Servery\VS 2P16C FS A (I) - 2 pane servery 16mm double glazed CLEARSTEP sashless vertical slider in aluminium frames (top pane fixed) FS.dwg




Rev	Description	Approved By	Date
I	Description for 16mm IGU units makeup updated	DF	18/12/2025
H	Delete P008 and replace with P229 - VS Sill	DF	19/8/2025
G	Description for 16mm Clearstep IGU makeup added	DF	Jul2025
F	VS 300Pa/800Pa sill adaptor changed to VS Sill/VS HP Sill	DF	Sep2024
E	Add sill options: 800Pa Sill, No Sill, 16mm Flapseal	SE	Apr2024
D	Update locks and extension pins	SE	Dec2020

Proprietary and confidential

The information contained in this drawing is the sole property of Aneeta Australia. Any reproduction in part or as a whole, without the written permission of Aneeta Australia is prohibited.

**Title:**  
2 pane servery 16mm double glazed CLEARSTEP sashless vertical slider in aluminium frames (top pane fixed) FS with large box / extra large box with aluminium covers, acrylic handle, no sill adaptor vertical section A-A



949 Stud Road, Rowville VIC 3178, ABN 80 062 883 729

**Material:**  
in Aluminium Frame

**Finish:**

**Die/Part:**

**Dwg No:** VS 2P16C FS A

Drwn:-

Chk:

Date: -

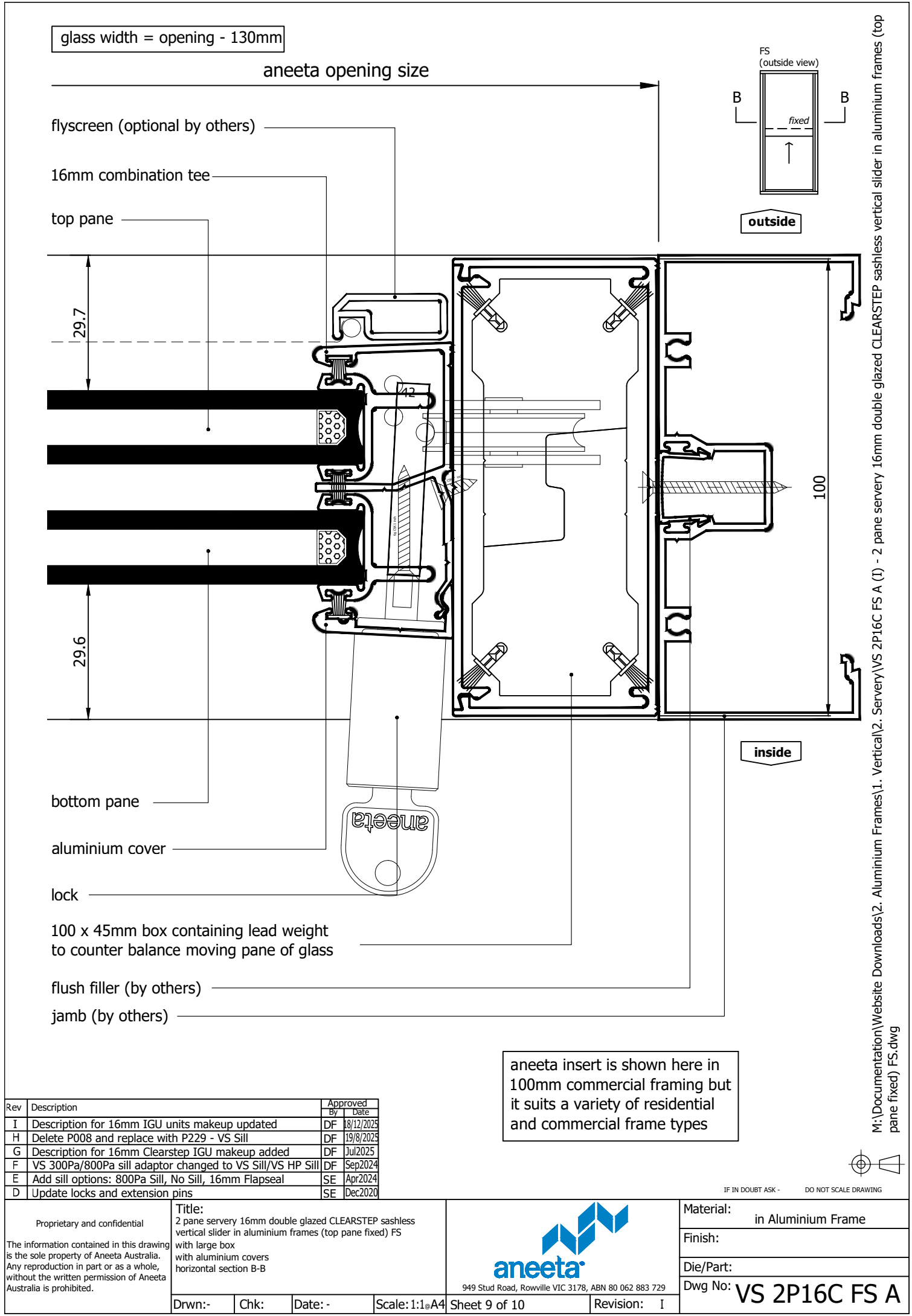
Scale: 1:2

Sheet 8 of 10

Revision: I


M:\Documentation\Website Downloads\2. Aluminium Frames\1. Vertical\2. Servery\VS 2P16C FS A (I) - 2 pane servery 16mm double glazed CLEARSTEP sashless vertical slider in aluminium frames (top pane fixed) FS.dwg





Rev	Description	Approved By	Date
I	Description for 16mm IGU units makeup updated	DF	18/12/2025
H	Delete P008 and replace with P229 - VS Sill	DF	19/8/2025
G	Description for 16mm Clearstep IGU makeup added	DF	Jul2025
F	VS 300Pa/800Pa sill adaptor changed to VS Sill/VS HP Sill	DF	Sep2024
E	Add sill options: 800Pa Sill, No Sill, 16mm Flapseal	SE	Apr2024
D	Update locks and extension pins	SE	Dec2020

Proprietary and confidential		Title: 2 pane servery 16mm double glazed CLEARSTEP sashless vertical slider in aluminium frames (top pane fixed) FS with large box with aluminium covers horizontal section B-B	
The information contained in this drawing is the sole property of Aneeta Australia. Any reproduction in part or as a whole, without the written permission of Aneeta Australia is prohibited.		Drwn:-	Chk:
		Date: -	Scale: 1:1@A4



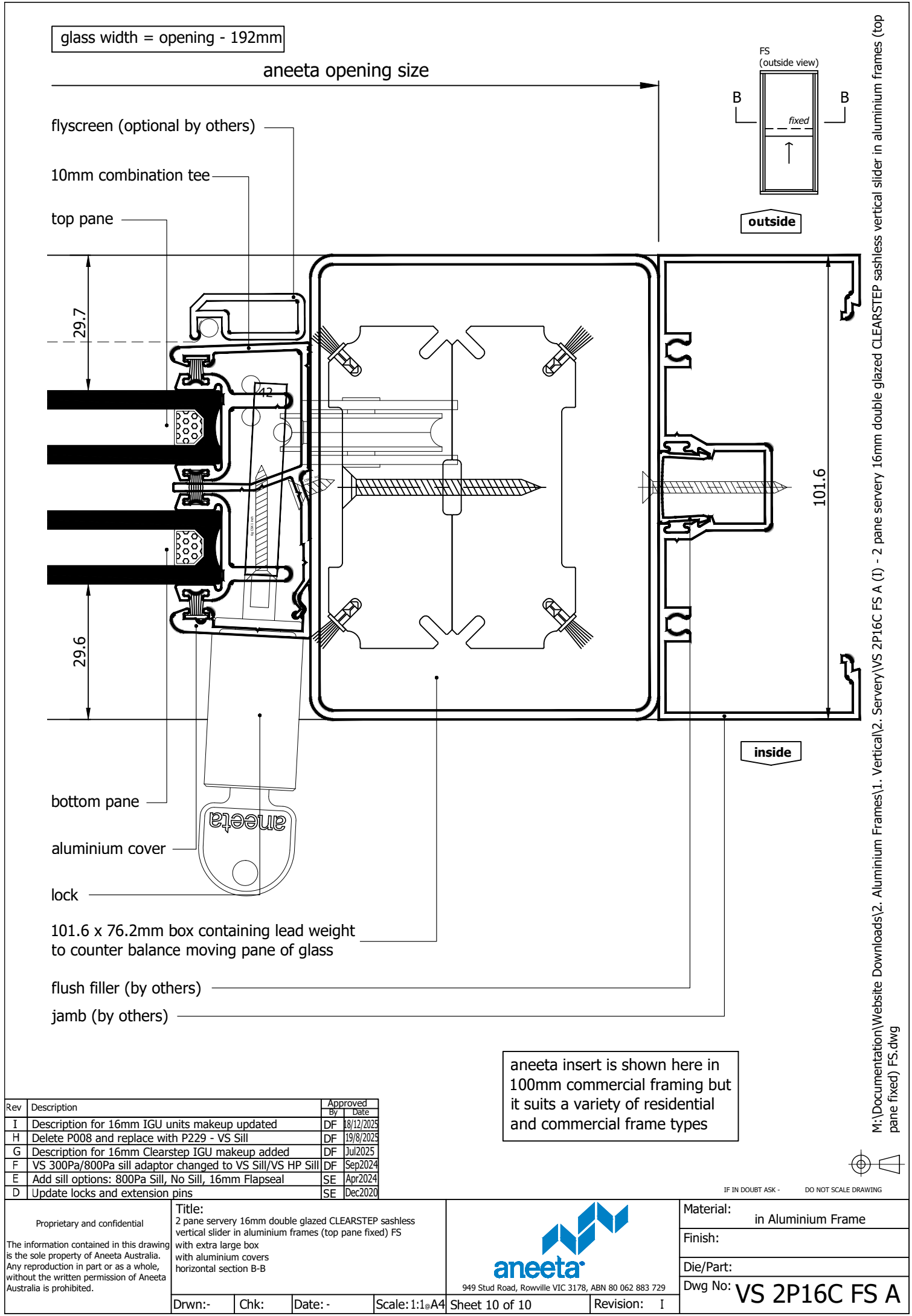
949 Stud Road, Rowville VIC 3178, ABN 80 062 883 729

Sheet 9 of 10

Revision: I

Material:	in Aluminium Frame
Finish:	
Die/Part:	
Dwg No:	VS 2P16C FS A

M:\Documentation\Website Downloads\2. Aluminium Frames\1. Vertical\2. Servery\VS 2P16C FS A (I) - 2 pane servery 16mm double glazed CLEARSTEP sashless vertical slider in aluminium frames (top pane fixed) FS.dwg



glass width = opening - 192mm

aneeta opening size

flyscreen (optional by others)

10mm combination tee

top pane

bottom pane

aluminium cover

lock

101.6 x 76.2mm box containing lead weight to counter balance moving pane of glass

flush filler (by others)

jamb (by others)

FS (outside view)

fixed


outside

inside

aneeta insert is shown here in 100mm commercial framing but it suits a variety of residential and commercial frame types

Rev	Description	Approved By	Date
I	Description for 16mm IGU units makeup updated	DF	18/12/2025
H	Delete P008 and replace with P229 - VS Sill	DF	19/8/2025
G	Description for 16mm Clearstep IGU makeup added	DF	Jul2025
F	VS 300Pa/800Pa sill adaptor changed to VS Sill/VS HP Sill	DF	Sep2024
E	Add sill options: 800Pa Sill, No Sill, 16mm Flapseal	SE	Apr2024
D	Update locks and extension pins	SE	Dec2020

Proprietary and confidential		Title: 2 pane servery 16mm double glazed CLEARSTEP sashless vertical slider in aluminium frames (top pane fixed) FS with extra large box with aluminium covers horizontal section B-B	
The information contained in this drawing is the sole property of Aneeta Australia. Any reproduction in part or as a whole, without the written permission of Aneeta Australia is prohibited.		Drwn:-    Chk:    Date: -    Scale: 1:1@A4	



949 Stud Road, Rowville VIC 3178, ABN 80 062 883 729

Sheet 10 of 10

Material:	in Aluminium Frame
Finish:	
Die/Part:	
Dwg No:	VS 2P16C FS A

M:\Documentation\Website Downloads\2. Aluminium Frames\1. Vertical\2. Servery\VS 2P16C FS A (I) - 2 pane servery 16mm double glazed CLEARSTEP sashless vertical slider in aluminium frames (top pane fixed) FS.dwg



IF IN DOUBT ASK - DO NOT SCALE DRAWING